

TREATY 7H015318

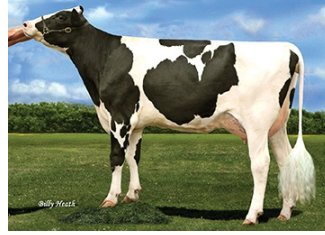
HO840003201118971

CHERRYPENCOL TREATY-ET TR TP TC TY TV TL TD HH1T HH2T HH3T HH4T HH5T HH6T

RIVETING X JEDI X COMMANDER

Sire: S-S-I BG FRZZLD RIVETING-ET
 Dam: CHERRY-ACRES JEDI LAURI-ET P-0
 MGS: S-S-I MONTROSS JEDI-ET

Born On: May 07, 2019
 Beta-casein: A2A2
 Kappa-casein: AA
 EFI: 9.3%
 aAa: 423



DAM Cherry-Acres Jedi Lauri-ET

INDEXES

TPI	2916
NM\$	746
CM\$	795
Feed Efficiency (%)	176
DWP\$	977
WT\$	205
CW\$	10

DAUGHTER FERTILITY

Fertility Index/Rel.%	1.6
DPR/Rel.%	1.0/73
HCR/Rel.%	2.3/70
CCR/Rel.%	1.9/73

MANAGEMENT TRAITS

SCE/Rel.%	2.2/
DCE/Rel.%	1.9/
Gestation Length/Rel.%	-0.1/
Early First Calving/Rel.%	4.8/
SSB/Rel.%	5.7/58
DSB/Rel.%	4.2/54
Productive Life/Rel.%	6.5/
Livability/Rel.%	3.4/
SCS/Rel.%	2.65/
Milking Speed/Rel.%	103/74

SIRE FERTILITY

SCR/Rel.%

PRODUCTION

PTA Milk (lbs)	705
PTA Protein (lbs)	47
PTA Protein (%)	0.09
PTA Fat (lbs)	66
PTA Fat (%)	0.14
Production Reliability %	77
Dtrs/Herds	

TYPE

PTA Type	1.50
Udder Composite	2.00
Feet & Leg Composite	0.34
Body Weight Composite	-0.52
Dairy Composite	-0.17
Type Reliability %	75
Dtrs/Herds	

CDCB/HA TYPE TRAITS

Trait	Value	Rel.%	Quality
Stature	short	0.64	tall
Strength	frail	-0.37	strong
Body Depth	shallow	-0.40	deep
Dairy Form	tight ribbed	0.79	open ribbed
Rump Width	narrow	0.04	wide
Rump Angle	high pins	0.59	sloped
Rear Leg (side view)	posty	-0.95	sickled
Rear Leg (rear view)	hock-in	0.26	straight
Foot Angle	low angle	0.73	steep angle
Feet & Leg Score	low	0.51	high
Fore Udder	loose	2.43	strong
Rear Udder Height	low	2.48	high
Rear Udder Width	narrow	1.94	wide
Udder Cleft	weak	1.03	strong
Udder Depth	deep	2.14	shallow
Front Teat Placement	wide	1.28	close
Rear Teat Placement	wide	1.34	close
Teat Length	short	-1.41	long

ZOETIS WELLNESS TRAITS CDCB

Trait	Value	Rel.%	Value	Rel.%
Mastitis	104	48	2.7	67
Retained Placenta	104	48	0.1	57
Metritis	107	46	1.4	58
Heifer Livability	N/A	N/A	1.00	
Hypocalcemia/Milk Fever	93	37	0.1	47
Ketosis	108	45	2.3	54
Displaced Abomasum	102	44	0.6	56
Lameness	108	44		
Cow Abortion	100	35		
Twinning	100	43		
Cystic Ovary	105	28		
Cow Respiratory Disease	107	40		
Calf Respiratory	100	42		
Calf Scours	105	43		
Calf Livability	100	46		