



AltaTOP-RED

011HO00594

KOEPON ALTATOP-RED-ET

SALVATORE RC X DELTA X CASHCOIN

HONLDM000648499675 | DOB 4/25/2018

Kappa-Casein AE | Beta-Casein A1A2

Haplotypes HH1F HH2F HH3F HH4F HH5F HCDF HH6F

Genetic Codes TC TD TL TP TV TY

aAa 243651 | EFI 10.7 %

Current Proof USA-202012

CDCB & HA-USA Genetic Evaluations 12/2020

CONFORMATION Based on 0 Daughters in 0 Herds (78% Rel)

Trait	Score	Rel
PTAT	+1.84	
UDC	+2.21	
FLC	+1.14	
Stature	+1.34	Tall
Strength	+0.65	Strong
Body Depth	+0.45	Deep
Dairy form	+0.54	Open
Rump Angle	+0.50	Sloped
Thurl Width	+0.06	Wide
R. Legs-S View	-0.62	Posty
R. Legs-R View	+1.36	Straight
Foot Angle	+1.56	Steep
F&L Score	+1.33	High
F. Udder Att.	+2.80	Strong
R. Udder Ht.	+3.05	High
R. Udder Wid.	+2.62	Wide
Udder Cleft	+0.79	Strong
Udder Depth	+2.11	Shallow
F. Teat Place	+0.85	Close
R. Teat Place	+0.84	Close
Teat Length	-0.73	Short

TPI	2589	NM\$	465
-----	-------------	------	------------



PRODUCTION

Milk	+1019 Lbs	79% Rel
Protein	+25 Lbs	-0.02%
Fat	+25 Lbs	-0.05%
Cheese Merit	+\$461	

Based on 0 Daughters in 0 Herds (100% US Daughters)

Milk Production - US daughters	
Fat Yield - US daughters	
Protein Yield - US daughters	

HEALTH TRAITS

Productive Life	+5.8	Daughter Pregnancy Rate	+0.6
Livability	+3.2	Cow Conception Rate	1.0
Somatic Cell Score	+2.76	Heifer Conception Rate	-0.5
Mastitis	1.9%	Metritis	1.9%
Ketosis	2.2%	Displaced Abomasum	1.0%
Retained Placenta	0.2%	Milk Fever	0.1%

Pedigree

SIRE	MR SALVATORE RC-ET
DAM	DELTA SANNE RF-ET
MGS	MR MOGUL DELTA 1427-ET
MGD	MS SUNVIEW COIN SUNGLOW-ET
MGGs	FARNEAR-TBR-BH CASHCOIN-ET
MGGD	DYMENTHOLM SUNVIEW SUNDAY

CALVING TRAITS

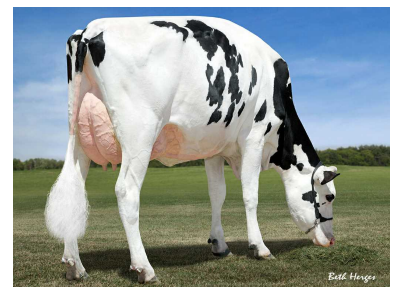
Sire Calving Ease	1.7%	70% Rel	3 Observ
Dtr Calving Ease	2.2%	70% Rel	0 Observ 0 dtr.
Sire stillbirth	5.0%	62% Rel	3 Observ
Daughter stillbirth	4.8%	63% Rel	0 Observ 0 dtr.



MGD: MS Sunview Coin Sunglow-ET



MGGD: Dymentholm Sunview Sunday



MGGD: Dymentholm Sunview Sunday