

Peak Moline-ET TC TP TR
POsitive x Medley x Octoberfest

12/2020	CDCB SUMMARY GENOMIC			NM\$ +808
Milk	+1344	77%R	Fluid Merit \$	+762
Fat	+116	+0.22%	Cheese Merit \$	+831
Protein	+52	+0.04%	Grazing Merit \$	+701
SCS	2.85	75%R	Gestation Len. -2	Fert. Index +0.1
PL	+4.1	74%R	Livability +1.2	Mastitis -0.4
DPR	-0.7	73%R	EFI 9.3%	gEFI 10.1%
HCR	+1.8			
CCR	+0.0		0 Dtrs 0 Herds	100% US

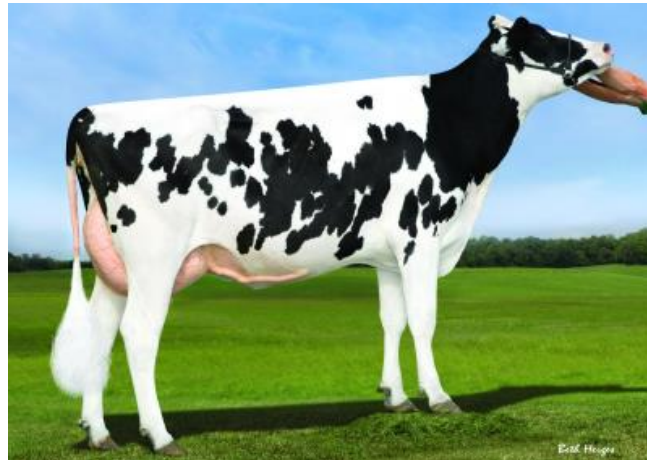
12/2020	CALVING SUMMARY		SCE 2.0 %
Sire Calving Ease	2.0%	62%R	0 Obs
Daughter Calving Ease	2.1%	59%R	0 Obs
Sire Stillbirth	4.7%	59%R	0 Obs
Daughter Stillbirth	5.2%	57%R	0 Obs

12/2020	HA TYPE SUMMARY			TPI +2931				
PTAT +1.21	75%R	UDC+1.27	FLC+0.04	BSC -0.10	0 D / 0 H			
				-2	-1	0	1	2
Stature	+0.75	Tall						
Strength	+0.45	Strong						
Body Depth	+0.49	Deep						
Dairy Form	+1.46	Open Rib						
Rump Angle	-0.16	High Pins						
Thurl Width	+0.32	Wide						
Rear Legs-Side	-0.05	Posty						
Rear Legs-Rear	+0.44	Straight						
Foot Angle	-0.13	Low						
Feet & Legs Score	+0.15	High						
F. Udder Attachment	+1.20	Strong						
Rear Udder Height	+1.83	High						
Rear Udder Width	+2.52	Wide						
Udder Cleft	+0.22	Strong						
Udder Depth	+0.59	Shallow						
Front Teat Placement	+0.39	Close						
Rear Teat P. Rear	+0.50	Close						
Teat Length	-0.39	Short						

Sire: Progenesis Positive
Dam: Pine-TRee 774 Medle 7670-ET

MGS: ABS Medley-ET
MGD: Seagull-Bay My Octavia-ET VG-85

MGGS: Ladys-Manor Octoberfest-ET
MGGD: Ssi Moonray Myesha-ET VG-85
02-01 2x 365d 33260m 4.0 1330f 3.3 1089p



MGGD: Ssi Moonray Myesha-ET