

# RAGER-RED 7H012344

HOUSA000072353457

RI-VAL-RE RAGER-RED-ET TP TC TY TV TL TD HH1T HH2T HH3T HH4T HH5T HH6T

RELIEF P X OBSERVER X ADVENT-RED

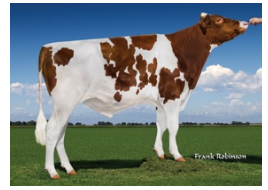
Born On: March 24, 2013

Beta-casein: A2A2

Kappa-casein: AB

EFL: 6.7%

aAa: 324156



Sire: PINE-TREE RELIEF P 4954

Dam: RI-VAL-RE OBSRVR SALSA-ET VG-88

4-05 2X 297D 13173 kgM 5.3% 700 kgF 3.1% 414 kgP

MGS: DE-SU OBSERVER-ET

Daughter Average:

12290 kgM 482 kgF 3.90%F 383 kgP 3.10%P



Groves-Vu Rager Tabbey-Red



River Dale Rager Trudy



River Dale Rager Trudy

## INDEXES

TPI	2509
NM\$	422
CM\$	444
Feed Efficiency (\$)	98
DWP\$	455
WT\$	75
CW\$	32

## PRODUCTION

PTA Milk (lbs)	615
PTA Protein (lbs)	30
PTA Protein (%)	0.04
PTA Fat (lbs)	45
PTA Fat (%)	0.07
Production Reliability %	99
Dtrs/Herds	3190/1165

## TYPE

PTA Type	1.41
Udder Composite	0.56
Feet & Leg Composite	0.99
Body Weight Composite	0.90
Dairy Composite	1.18
Type Reliability %	98
Dtrs/Herds	923/446

## DAUGHTER FERTILITY

Fertility Index/Rel.%	0.0
DPR/Rel.%	-0.1/97
HCR/Rel.%	-0.3/95
CCR/Rel.%	1.3/97

## MANAGEMENT TRAITS

SCE/Rel.%	2.2/
DCE/Rel.%	3.9/
Gestation Length/Rel.%	-1.2/
Early First Calving/Rel.%	-0.2/
SSB/Rel.%	4.6/99
DSB/Rel.%	5.8/95
Productive Life/Rel.%	4.7/
Livability/Rel.%	1.5/
SCS/Rel.%	2.86/
Milking Speed/Rel.%	91/87

## CDCB/HA TYPE TRAITS

Stature	short	0.99	tall
Strength	frail	1.20	strong
Body Depth	shallow	1.61	deep
Dairy Form	tight ribbed	1.10	open ribbed
Rump Width	narrow	1.15	wide
Rump Angle	high pins	1.13	sloped
Rear Leg (side view)	posty	0.94	sickled
Rear Leg (rear view)	hock-in	0.91	straight
Foot Angle	low angle	0.79	steep angle
Feet & Leg Score	low	1.24	high
Fore Udder	loose	1.07	strong
Rear Udder Height	low	0.64	high
Rear Udder Width	narrow	0.90	wide
Udder Cleft	weak	1.58	strong
Udder Depth	deep	0.16	shallow
Front Teat Placement	wide	0.99	close
Rear Teat Placement	wide	2.27	close
Teat Length	short	-0.78	long

## SIRE FERTILITY

SCR/Rel.%	-1.2/99
-----------	---------

## ZOETIS WELLNESS TRAITS CDCB

	Value	Rel.%		Value	Rel.%
	105	83	Mastitis	2.8	92
	99	86	Retained Placenta	0.1	79
	94	80	Metritis	-0.1	82
	N/A	N/A	Heifer Livability	1.00	
	102	65	Hypocalcemia/Milk Fever	0.1	67
	91	82	Ketosis	0.2	78
	94	77	Displaced Abomasum	0.0	80
	103	81	Lameness		
	90	71	Cow Abortion		
	99	82	Twinning		
	105	54	Cystic Ovary		
	101	74	Cow Respiratory Disease		
	101	90	Calf Respiratory		
	100	82	Calf Scours		
	108	85	Calf Livability		