

522HO04319 AUGUSTUS-P-RED

Reg: HONLD000840442679
RHA: 99%

DOB: 11/03/2019
aAa: 243 HHP HHR BB A1A2

Drouner K&L Augustus P-Red-ET PC RC TC
Solitair P Red x x



12/2021 CDCB SUMMARY GENOMIC				NM\$ +659	
Milk	+827	79%R	Cheese Merit \$		+674
Fat	+38	+0.02%	Fluid Merit \$ \$		+590
Protein	+37	+0.04%	Gestation Len. -1	GM\$	+589
CFP	+75		EFI 7.8%	gEFI 9.2%	
SCS	2.62	74%R	Mastitis +3.2	Fert. Index	+1.4
PL	+6.4	73%R	Livability +3.6	Heifer Liv.	+1.0
DPR	+1.4	73%R	HCR -0.5	CCR	+0.7
RFI	+21				
Feed Saved	-124	41%R	0 Dtrs	0 Herds	100% US



Sire: Solitair
Dam: Aiko1557

MGS: WWDEU000122298100
MGD:

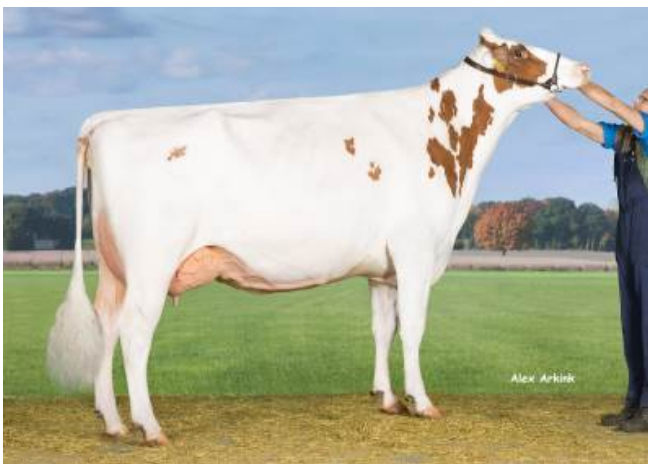
12/2021 CALVING SUMMARY				SCE 1.8 %	
Sire Calving Ease	1.8%	60%R			0 Obs
Daughter Calving Ease	2.6%	54%R			0 Obs
Sire Stillbirth	5.8%	53%R			0 Obs
Daughter Stillbirth	6.0%	52%R			0 Obs

12/2021 HA TYPE SUMMARY TPI +2719
PTAT +1.65 77%R UDC+1.45 FLC+1.58 BSC +0.68 0 D / 0 H

			-2	-1	0	1	2
Stature	+1.04	Tall					
Strength	+0.63	Strong					
Body Depth	+0.40	Deep					
Dairy Form	+0.28	Open Rib					
Rump Angle	+0.38	Sloped					
Thurl Width	+0.49	Wide					
Rear Legs-Side	-0.23	Posty					
Rear Legs-Rear	+2.03	Straight					
Foot Angle	+1.63	Steep					
Feet & Legs Score	+1.59	High					
F. Udder Attachment	+2.17	Strong					
Rear Udder Height	+1.82	High					
Rear Udder Width	+1.88	Wide					
Udder Cleft	+0.35	Strong					
Udder Depth	+1.46	Shallow					
Front Teat Placement	+0.75	Close					
Rear Teat P. Rear	+0.41	Close					
Teat Length	+0.62	Long					



MGD: DROUNER K&L AIKO 1398 VG-89



3rd Dam: Drouner AJDH Aiko 1267 EX-90