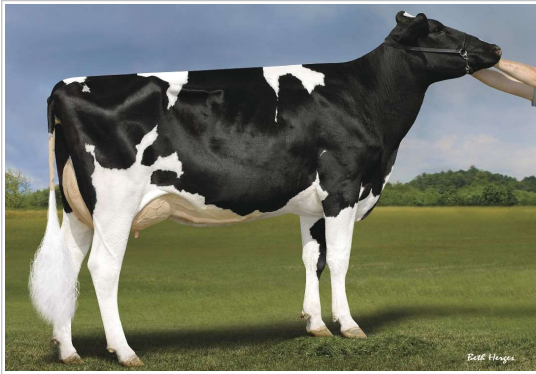


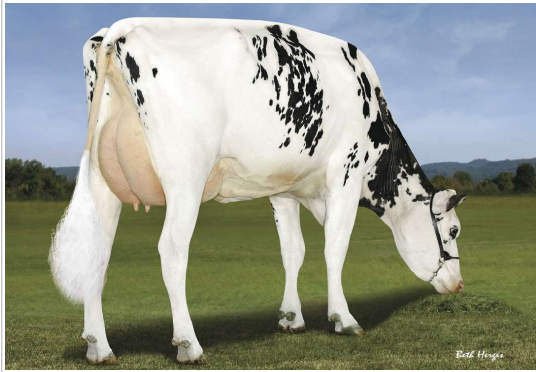
14H014085 
SOLUTION



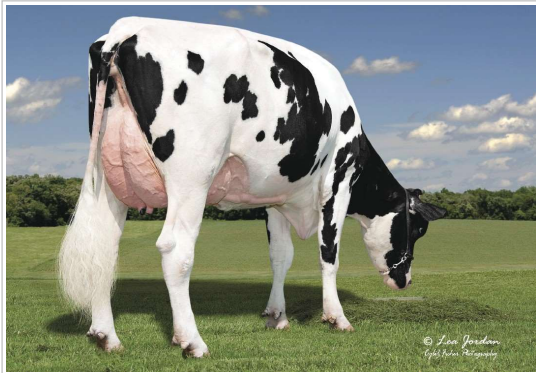
Daughter: Ladys-Manor SltN Sebrina-ET (GP-83)
 Ladys-Manor LLC, Monkton, MD



Daughter: Lars-Acres Sol New Flame-ET (VG-85)
 Larson Acres, Inc., Evansville, WI



Daughter: S-S-I Solution 10090-ET
 Destiny Farms LLC, Marshfield, WI



Daughter: Adaway Solution 2258-ET (GP-80)
 Adaway Dairy LLC, Waucoma, IA

Fustead S-S-I Solution-ET

TR TP TC TV TL TY TD

Frazzled x Rubicon x Oak

Born: 2/22/2017

Reg: HO8403139490455

99% RHA-I aAa:423 DMS:345

Brian & Wendy Fust, Wausau, WI

Beta-Casein: A2A2 Kappa-Casein: AB

Sire: Melarry Josuper Frazzled-ET

Dam: Fustead Rubicon Lavon-ET (VG-85-VG-MS-DOM)

MGS: Edg Rubicon-ET

MGD: Fustead Oak Lafonda-ET (VG-86-VG-MS-DOM)

MGGs: Pine-Tree Altaoak-ET

MGGD: Glen-Toctin Bolt Lucille-ET (EX-90-EX-MS-GMD-DOM)



Fustead S-S-I Solution-ET

Production & Health Traits - CDCB-S GENOMIC EVALUATION (12/21)

Milk	+718	99%R	957 D	180 H	US
Fat	+53	+0.09%			
Protein	+24	+0.01%	Net Merit \$		+\$650
Productive Life	+6.8	88% R	Fluid Merit \$		+\$628
Cow Livability	+1.6	74% R	Cheese Merit \$		+\$658
SCS	2.69	97% R	Grazing Merit \$		+\$519
Mastitis	+1.9	78% R	HHP\$™		+\$650
HCR	+4.9	96% R	CCR		+0.0
DPR	-1.4	89% R	SCR		+2.5

Calving Traits - CDCB-S GENOMIC EVALUATION (12/21)

Sire Calving Ease	2.6%	99% R	8,230 Obs
Daughter Calving Ease	1.4%	97% R	461 Dtrs
Sire Stillbirth	5.6%	98% R	7,483 Obs
Daughter Stillbirth	3.8%	96% R	401 Dtrs

Wellness Traits - ZOETIS WELLNESS EVALUATION (12/21)

Cows	DWP\$	+\$626	WT\$	+\$89
Mastitis	99	61% R	Cow Resp. Dis.	100 54% R
Lameness	107	58% R	Cystic Ovary	102 43% R
Cow Abortion	96	49% R	Twinning	98 78% R
Metritis	105	81% R	Ketosis	105 80% R
Ret. Placenta	98	81% R	Milk Fever	97 58% R
Disp. Abomasum	103	57% R		

Calves	CW\$	+\$48
Calf Resp. Dis.	108	93% R
Calf Livability	104	91% R

Type Traits - CDCB-S/HA GENOMIC (12/21)

PTAT +0.37 97%R UDC +0.61 FLC -0.34 302 Dtrs 64 Herds

