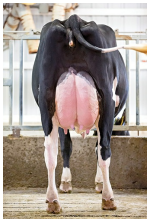




SIEMERS RENEGADE ROZLINE-ET TR TP TC TY TV TL TD HH1T HH2T HH3T HH4T HH5T HH6T HMWT
RENEGADE X FRAZZLED X RUBICON

Sire: S-S-I PR RENEGADE-ET
Dam: SIEMERS FRZLD ROZ 28450-ET VG-88
4-05 3X 365D 18,271 kgM 4.6% 836 kgF 3.0% 550 kgP
MGS: MELARRY JOSUPER FRAZZLED-ET

Daughter Average:
13,945 kgM 656 kgF 4.70%F 449 kgP 3.20%P



Siemers Rzline Paris 34969-ET



Siemers Rzline Paris 34969-ET



Siemers Rzline Paris 34969-ET

INDEXES

TPI	2951
NM\$	880
CM\$	898
Feed Efficiency (\$)	247
Feed Saved	-35
HHP\$	998
DWP\$	808
WT\$	51
CW\$	-58

PRODUCTION

PTA Milk (lbs)	609
PTA Protein (lbs)	40
PTA Protein (%)	0.07
PTA Fat (lbs)	117
PTA Fat (%)	0.33
Production Reliability %	93
Dtrs/Herds	105/35

TYPE

PTA Type	1.78
Udder Composite	1.74
Feet & Leg Composite	1.06
Body Weight Composite	0.68
Dairy Composite	0.68
Type Reliability %	87
Dtrs/Herds	23/9

DAUGHTER FERTILITY

Fertility Index/Rel. %	-0.2
DPR/Rel. %	-0.6/81
HCR/Rel. %	2.0/88
CCR/Rel. %	0.4/81

SIRE FERTILITY

SCR/Rel. %	0.8/94
------------	--------

MANAGEMENT TRAITS

SCE/Rel. %	2.1/97
DCE/Rel. %	2.6/85
Gestation Length/Rel. %	-0.3/77
Early First Calving/Rel. %	-0.1/75
SSB/Rel. %	6.3/93
DSB/Rel. %	4.2/81
Productive Life/Rel. %	3.9/83
Livability/Rel. %	-0.3/78
Residual Feed Intake/Rel. %	-68/28
SCS/Rel. %	2.71/89
Milking Speed/Rel. %	94/79

CDCB/HA TYPE TRAITS

Trait	Value	Rel. %	Quality
Stature	short	0.91	tall
Strength	frail	0.95	strong
Body Depth	shallow	0.70	deep
Dairy Form	tight ribbed	0.79	open ribbed
Rump Width	narrow	0.58	wide
Rump Angle	high pins	-1.07	sloped
Rear Leg (side view)	posty	0.19	sickled
Rear Leg (rear view)	hock-in	1.69	straight
Foot Angle	low angle	1.05	steep angle
Feet & Leg Score	low	1.03	high
Fore Udder	loose	2.16	strong
Rear Udder Height	low	2.21	high
Rear Udder Width	narrow	2.13	wide
Udder Cleft	weak	1.49	strong
Udder Depth	deep	1.32	shallow
Front Teat Placement	wide	1.17	close
Rear Teat Placement	wide	1.50	close
Teat Length	short	0.96	long

ZOETIS WELLNESS TRAITS CDCB

Trait	Value	Rel. %	Trait	Value	Rel. %
Mastitis	104	62	Mastitis	2.4	74
Retained Placenta	99	55	Retained Placenta	-0.5	71
Metritis	103	53	Metritis	0.8	69
Hypocalcemia/Milk Fever	98	50	Hypocalcemia/Milk Fever	0.1	62
Ketosis	97	48	Ketosis	1.7	66
Displaced Abomasum	96	45	Displaced Abomasum	0.5	67
Lameness	96	51	Lameness		
Cow Respiratory Disease	98	46	Cow Respiratory Disease		
Cow Abortion	90	39	Cow Abortion		
Twinning	95	51	Twinning		
Cystic Ovary	103	33	Cystic Ovary		
Heifer Livability	N/A	N/A	Heifer Livability	0.4	62
Calf Respiratory Disease	97	54	Calf Respiratory Disease		
Calf Scours	95	57	Calf Scours		
Calf Livability	92	52	Calf Livability		