

551HO04449 REDLEA*RC

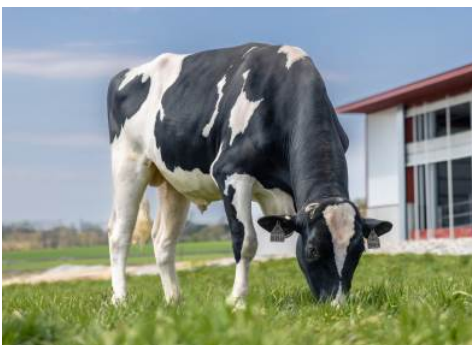
Reg: HO840003213134224
RHA: %

DMS: 345,234 aAa: 135 HHR AB A2A2 HU1F
DOB: 12/04/2020



EcoFeed@heifer: 96 - 62% R. Cow: 110 - 50% R.

Stgen RC Redlea-ET RC TC
Captain x Salvatore RC x Delta



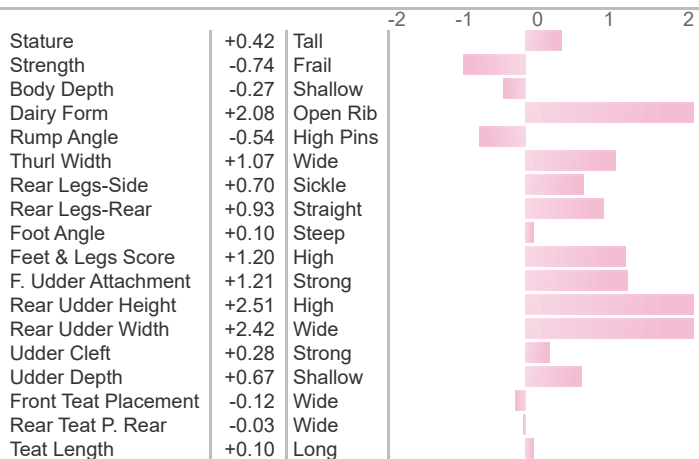
12/2023	CDCB SUMMARY GENOMIC				NM\$ +1110
Milk	+1666	82%R	Cheese Merit \$		+1123
Fat	+114	+0.17%	FM\$ +1020	GM\$	+1083
Protein	+68	+0.05%	Gestation Len. -2	MSP	+97
CFP	+182		EFI 9.9%	gEFI 10.4%	gIB 12.7%
SCS	2.83	79%R	Mastitis +2.3	Fert. Index	+0.4
PL	+5.0	77%R	Livability -0.2	Heifer Liv.	+0.5
DPR	-0.3	77%R	HCR +1.3	CCR	+0.2
RFI	-59				
Feed Saved	+250	45%R	0 Dtrs	0 Herds	100% US

Sire: Genosource Captain-ET TL TD TV
Dam: HO840003213133800

12/2023	CALVING SUMMARY			SCE 2.0 %
Sire Calving Ease	2.0%	89%R		297 Obs
Daughter Calving Ease	2.4%	70%R		0 Obs
Sire Stillbirth	5.7%	81%R		278 Obs
Daughter Stillbirth	5.4%	64%R		0 Obs

MGS: Mr Salvatore RC-ET
MGD:

12/2023	HA TYPE SUMMARY					TPI +3097
PTAT +1.76	80%R	UDC+1.50	FLC+1.06	BSC -1.25	0 D / 0 H	



Dam: Fairmont Salvatore Doris-ET